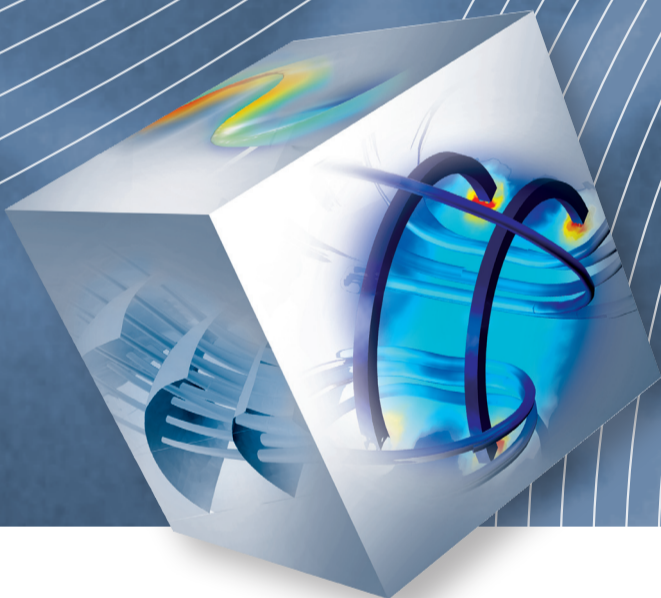


# MODELLING OF METAMATERIALS IN COMSOL MULTIPHYSICS FOR MICROWAVE AND OPTICS APPLICATIONS



## Date & Location

CITY: London  
DATE: 1st Sept Tuesday  
LOCATION: Queen Mary University of London  
1st Floor  
Informatics Teaching Laboratory  
(ITL, Building 22 on the map)

PROGRAM:  
12:00 - 12:20 Introduction to COMSOL Multiphysics  
and modelling of metamaterials  
12:20 - 13:00 Demonstration  
13:00 - 14:00 Lunch  
14:00 - 14:30 Case Studies & Successful stories  
14:30 - 15:30 Hands-on Workshop  
15:30 - 15:45 Coffe Break  
15:45 - 16:15 Questions & Summary

*We chose COMSOL because it is likely the only commercial simulation tool that enables the user to specify the unusual electromagnetic properties of the shell. Specifically, the shell in our theoretical electromagnetic cloak has highly anisotropic properties that vary smoothly and continuously. Implementing this was straight forward.*

Steven A. Cummer. Duke University, Durham, NC

Please register online: [www.uk.comsol.com/events/cmmw/8385/](http://www.uk.comsol.com/events/cmmw/8385/)  
or e-mail: [tiziana@comsol.com](mailto:tiziana@comsol.com)

